

Setup Essentials

AT&T Mobile Hotspot MiFi® 2372

- Getting Started
- Manage Data Usage
- Navigation and Features
- Passwords/Temporary Hotspots



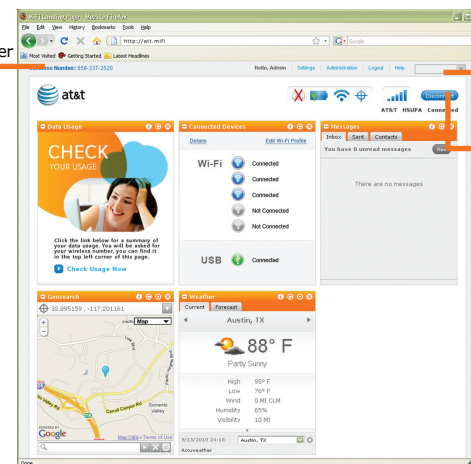
Wi-Fi LED

Power button/LED

Phone Number

Login

Connect / Disconnect Button



GETTING STARTED

Insert SIM and charge battery

Charge battery fully (takes about four hours).

** The USB cable is not intended for charging of the device and cannot be used for connectivity. It is for firmware upgrades only. **

Press the power button to turn on device

LED indicators

Power/Connection LED (Network)

Flashing: Network available; Solid: Connected

Green	GPRS/EDGE	Blue	UMTS
Violet	HSPA	Cyan	SMS

Wi-Fi LED

Flashing: Connected; Solid: Wi-Fi on, no users
Blue Wi-Fi on

Go to your computer or device's Wi-Fi/Networks manager

Select the wireless network (SSID) that matches the SSID on the label on the bottom of your device.

Enter your Wi-Fi key when prompted

The Wi-Fi key is located on the label on the bottom of your device (network security key/password).



You're connected to the MiFi

You should be already connected to the Internet if you are within the AT&T coverage area. If the Internet is not available, go to the MiFi Landing Page <http://att.mifi> (do not use "www") and click Connect. If the Connect button is not visible, go to the login box and enter the password: attmifi (case sensitive).

NAVIGATION AND FEATURES (att.mifi)

The MiFi Landing Page is a web interface that lets you manage your device settings. The MiFi Administration section allows you to configure your security and profiles. Enter <http://att.mifi> into your web browser to access (do not use "www").

MiFi Landing Page (<http://att.mifi>) Navigation bar

Phone Number: Located on top left (also on sales receipt/billing statement)

Settings: Choose widgets for the MiFi Landing Page

Administration: Configure/Customize your MiFi device

Login: You must login to access administrative functions

Help: Access Help for the page you are viewing

Change Admin Password for MiFi Landing Page (recommended at the time of setup)

Click Administration>System>Password. Enter default password, attmifi, the enter and verify your new password. Click Apply. You will need to login again with the new password.

Status Icons/bar

Device battery life, Wi-Fi status, GPS status, network strength, Connect/Disconnect (login required to Connect)

Widgets

Mini apps to monitor Data Usage, GPS, Connected Wi-Fi Devices, SMS and Weather

MiFi Administration Menu

Home: Network and Wi-Fi Status

Applications: Setup file sharing with a microSDHC card (sold separately); Customize MiFi Landing Page settings

Wi-Fi: View Wi-Fi status, change security profiles, advanced features

Internet: (Advanced) View Internet status and diagnostics

Router: (Advanced) Manage router functionality

System: Change MiFi administration password, enable GPS, power management and other system settings

GPS settings and configuration

You will need to manually enable GPS in the System Settings of the MiFi Administration section. Go to <http://att.mifi> and login. Click Administration>System>Settings. Select the GPS setting you desire and click Apply.

How to share files on the go

To enable sharing, go to <http://att.mifi>, login and Click Administration. Go to Applications>File Sharing and check Enable File-Sharing. Click Apply. To access the files on your microSDHC card, open up My Computer (Windows) or Finder(Mac). Type: \\192.168.1.1 and hit enter/return. The files become visible.

MANAGE DATA USAGE

Manage your monthly data usage

1. On the MiFi Landing Page (<http://att.mifi>), click Check Usage Now in the Data Usage widget.
2. First time use requires registration. To register, click Get Started under Not Yet Registered?
3. Enter the required information, then click Continue.
4. Once the registration process is complete, you will be able to access your account and manage your data usage.



MiFi, the MiFi logo, Novatel Wireless and the Novatel Wireless logo are trademarks of Novatel Wireless, Inc. All rights reserved. AT&T, the AT&T logo and all other AT&T marks contained herein are trademarks of AT&T Intellectual Property and/or AT&T affiliated companies. All other marks contained herein are the property of their respective owners.

PASSWORDS/TEMPORARY HOTSPOTS

Go to <http://att.mifi> and login. Click Administration>WiFi>Profiles

Change Wi-Fi Key

Click Edit WiFi Profile. Enter new personal WiFi Key in the Network Key field (min 8 characters). Click Apply and Return to Profile list and click Apply again.

Create Temporary Hotspot

Select Temporary Hotspot from the Profile menu. Click Generate new values. Write down the new information. Click Apply, then Return to Profiles list and click Apply again. Reconnect with the new settings. Once finished with the shared session, go back to the WiFi Profiles screen and set your profile back to secure.

